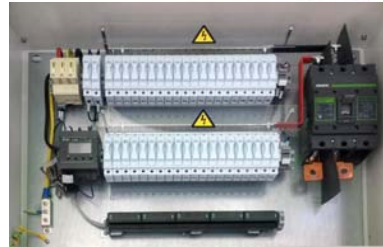


1500V PV Combiner Box



External Appearance



Internal View

For a large-scale grid-tied PV system, it is general to install a DC combining device between the PV arrays and inverters to minimize the cable distance, facilitate maintenance and improve reliability. Chint Power PV combiner box is a highly reliable and practical product to meet CHINA PV industry standard and power electric regulations. A number of PV modules with same features connected in series to the fuse in combiner box, then total amount of 16/1 2/8 strings connected in parallel which protected by SPD through positive and negative bus to the circuit breaker to upgrade safety of the system.

Chint Power 1500V PV combiner box configure with DC SPD, 1500V fuse, and circuit breaker. The smart detection module in the PV combiner box can monitor PV string current, BUS voltage, device status and failure, etc. The fault alarm and communication functions help users to accurately monitor the PV arrays on time, maximize PV system efficiency, significantly reduce the cost of whole PV system.

- DC Anti-Arc function(option)
- 16 basic input strings (customizable)
- Min.1 500V DC high voltage circuit breaker, safe and reliable
- Specified high voltage DC fuse protection
- 1500V SPD protection on both positive and negative poles
- Optional detection module for string current and bus voltage with remote monitoring and status display functions. Fault alarm will be given through communication system when a failure is detected
- Direct power supply from PV input with SPD protection.
- LED user interface for real-time operation status and parameters display, precise and concise, convenient for operation and debugging
- Wall mounting available, water and rust proof, IP65 protection class for outdoor use
- Convenient for installation and maintenance



Model Name	CPS CB20S
Electric Property	
Max. Input Strings*	20
Max. DC Voltage	1500Vdc
Rated Current for Each String(Replaceable)	15A
Input Cable	4~6mm ²
Output Cable	240mm ² (Al)
SPD	Yes
DC Circuit Breaker	Yes
Optional Function	
Anti-reverse diode	Yes
SPD Failure Detection	Yes
Switch Status Detection	Yes
Communication	Standard: RS485/Optional: Zigbee
Working Power Supply	PV
Environmental Property	
Protection Degree	IP65
Operating Temperature Range	-25°C - +55°C
Operating Humidity	0-95% non-condensing
Operating Altitude	4000m
Cooling	Natural
Installation	Wall mounting
Mechanical Data	
Dimensions (WxHxD) (mm)	850x650x200
Weight (kg)	40

Schematic Diagram

